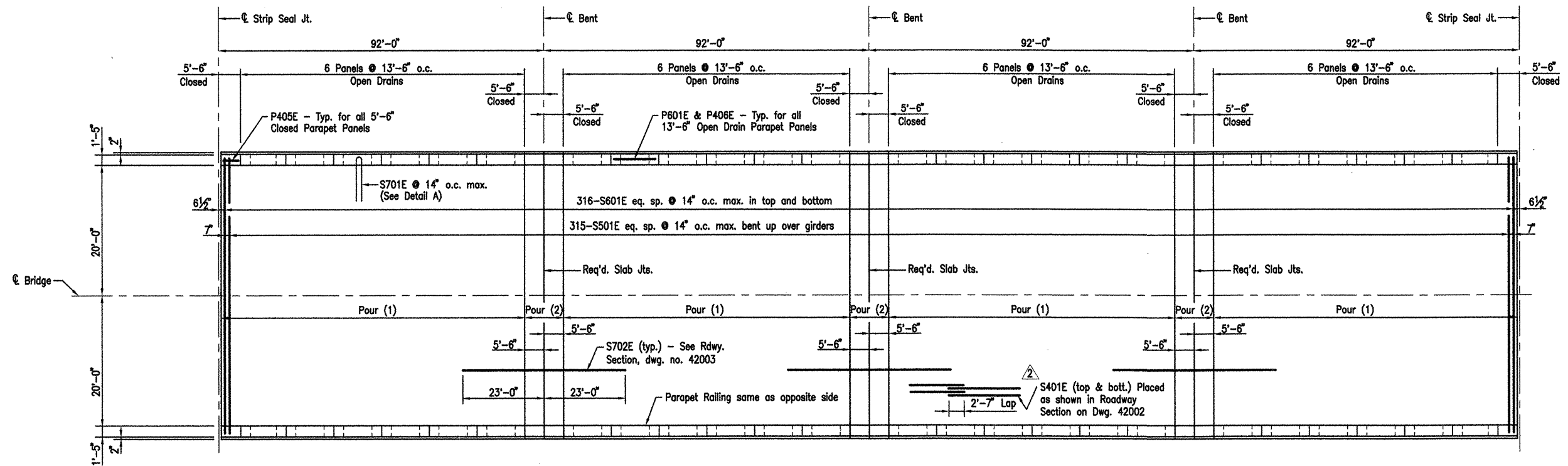


ACAD SCALE: 1/16"=1'-0"

COMPANY\1999 JOBS\99-044 AHTD\WHITERIVER\JOB 110394\368sibdetail1

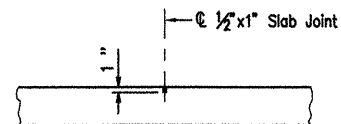
DATE REVISED	DATE FILMED	DATE REVISED	DATE FILMED	FED. ROAD NO.	STATE	FED. AID PROJ. NO.	SHEET NO.	TOTAL SHEETS
6-3-10					ARK.			
4-1-11								
				JOB NO.	110394	92	196	
				06830	368' UNIT	42004		



PLAN
N.T.S.

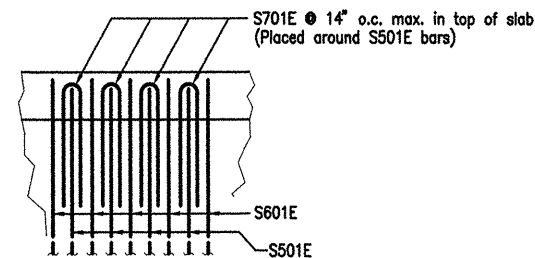
Sta. 328+78 to Sta. 336+14 (Two Units Required)

NOTE: Pours with the same number may be placed simultaneously or separately. All Pours (1) must be placed before Pours (2) can be placed. 48 hours shall elapse between the end of a pour and the start of the next pour. 72 hours shall elapse between the end of a pour and the start of an adjacent pour. Any railing pours made before the entire slab unit has been placed must be approved by the Bridge Engineer. Concrete in bridge superstructure shall be consolidated for the entire pour before any concrete has taken its initial set. This may require the use of a retarding agent. The Contractor must obtain approval from the Bridge Engineer for any deviations from the pouring sequence.



Use 1/2" X 1" Type 3, 4 or 6 Joint Sealer. See Subsection 501.02(h) and 501.05(j). Backer rod shall not be installed. Joint Sealer shall be measured and paid for as Class S(AE) Concrete-Bridge. Slab Joints shall extend to the outside edge of the deck slab. Slab joints shall be installed before the parapet railing is poured. If slab joints are to be sawed, they shall be sawed as soon as the concrete has sufficiently set to allow sawing of the joint without damage to the slab. Slab joints shall be placed at all pouring sequence construction joints and required slab joint locations.

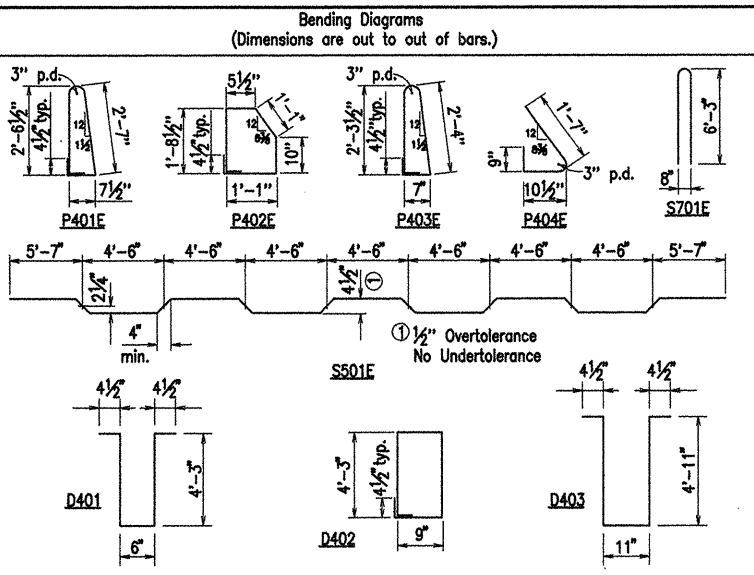
SLAB JOINT DETAIL
N.T.S.



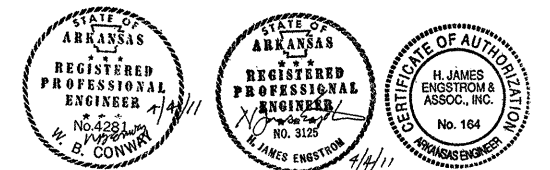
DETAIL A
N.T.S.

Mark	No. Req'd.	Length	Dia. Pin
S401E	880	47'-6"	Str.
S501E	315	43'-6"	3"
S601E	632	42'-10"	Str.
S701E	630	12'-10"	6"
S702E	159	46'-0"	Str.
P401E	688	6'-4"	2"
P402E	688	5'-8"	2"
P403E	384	5'-11"	2"
P404E	384	3'-1"	2"
P405E	96	5'-2"	Str.
P406E	192	13'-2"	Str.
P601E	240	13'-2"	Str.
D401	128	9'-5"	2"
D402	64	10'-4"	2"
D403	96	11'-2"	2"
D601	192	6'-9"	Str.
D602	72	7'-4"	Str.
D603	48	20'-7"	Str.

BAR LIST PER 368' UNIT



- 1 Revised Quantity by HJE/MM - WBC 6-3-10
2 Added S401E Bar Lap Splice Detail & Revised Bar List by HJE/MM - WBC 4-1-11



ALTERNATE NO. 1
WHITE RIVER BRIDGE APPROACHES

DETAILS OF 368'-0" CONT.
PRESTRESSED CONCRETE GIRDER UNITS
(SHEET 4 OF 7)

WHITE RIVER STR. & APPRS.
(CLARENDON) (PH 1) (F)
MONROE COUNTY

ROUTE 79 SEC. 13
ARKANSAS STATE HIGHWAY COMMISSION
LITTLE ROCK, ARK.

Engstrom/Modjeski and Masters, Inc.

DRAWN BY: GPT DATE: Nov. 07 FILENAME: b11039412_s04
CHECKED BY: YO DATE: Nov. 01 SCALE: 1/16" = 1'-0"
DESIGNED BY: GPT DATE: Nov. 01
BRIDGE NO. 06830 DRAWING NO. 42004

BRIDGE ENGINEER